

GENERAL FEATURES

- **TORK series S5074 direct acting plate mounting compressor solenoid valves are 3/2 way normally closed and have small body size.**
- **Low coil power (5.5 W for DC , 7.2 - 8.5 VA form AC) and curent**
- **Manual override or without manuel override, for small body (1/8" and 1/4"),square type body and easy installation**
- **Suitable for non-aggressive liquids (water, light oil (2E) etc...), gaseous fluids (air, inert gases etc...)**
- Working Temperature:-10°C / +160°C
- Not suitable for use with dangerous fluids listed in Group 1
- **Don't require any differential pressure**
- Compact and low weight valve enabling and quick installation
- High reliability, quality and performance; long life, corrosion resistance
- Ideal for the automatic control of media in a wide range of applications.
- Coils interchangeable
- Flow factor Kv of each valve is indicated, so that the flow Q can be calculated as a function of pressure
- Solenoid valves must be used with filtered fluids.
- Solenoid valve can be mounted in any position without affecting operation; vertical with coil upwards preferred.
- Standard pipe connection is G (BSP) (ISO 228-1) and on request; other pipe connections are available (NPT (ANSI 1.20.3))

ELECTRICAL CHARACTERISTICS

Continuous Duty : ED %100
 Coil Insulation Class : H (180°C)
 Coil Impregnation : Polyester Fiber Glass
 Coil Encapsulation Material : Fiber Glass Reinforced
 Ambient Temperature : from -10°C; +60°C
 Protection Degree : IP 65 (EN 60529) with coil dully fitted with the plug connector
 Electric Plug Connection : DIN 46340 3-poles micro plug connectors (DIN 43650)
 Electrical Safety : IEC 335
 Standard Voltages : For AC 12V, 24V, 48V, 110V, 230V
 For DC 12V, 24V, 48V, 110 V

Other voltages on request;
 Voltage Tolerances : For AC -15%; +10%, For DC -5%; +10%
 Frequency : 50 Hz , other frequencies on request; (60 Hz)
 On request; connector with LED
 Specify coil voltage with order

MATERIALS IN CONTACT WITH FLUID

Body : Brass
 Internal Parts : Stainless Steel
 Sealing : FPM (VITON)
 Shading Ring : Copper
 Seats : Brass
 Core Tube : Stainless Steel
 Springs : Stainless Steel
 On request; nickel plated body

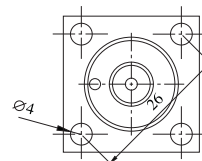
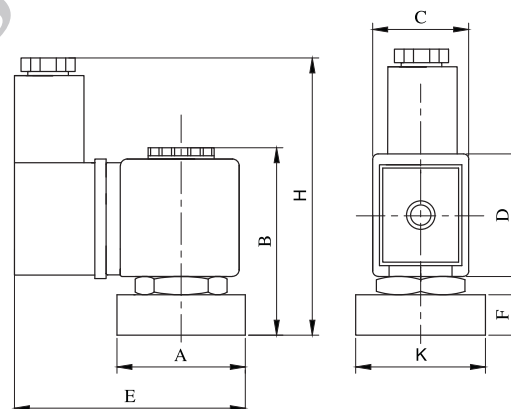
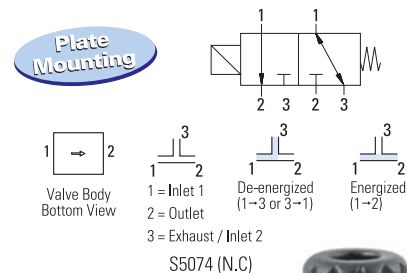
TECHNICAL FEATURES

Max Viscosity : 5°E (~37cSt or mm²/s)
 Response Time : Opening Time:30 ms, Closing Time :30 ms
 Maximum Allowable Pressure:10 bar



Application

Normally Closed



On request; solenoid valve can have 2 mounting holes at the bottom of the body.

Dimensions (mm)

A	B	C	D	E	F	H	K
25	52	22	29.5	61	6	68	25

Valve Type / Order no	Connection Size	Orifice size	Pressure		KV	Fluid Temperature		Seal	Weight
			min	max		min	max		
S5074	G	mm	bar	bar	lt/min	°C			(kg)
S 5 0 7 4 . 0 1 8		1.8	0	6	1-2=1,35 , 2-3=1,35	-10 160	VITON	0.27	

Useful Informations

1 bar:14,5 PSI:10 mH₂O:10 N/cm²:1 kg/cm²:100000 Pa , 1 PSI:69 mbar,1 m³/h:4,405 GPM:16,7 L/d 1 Gallon / minute:0,227 m³/h, 0°C:89,6 F
 Sealings:FPM (VITON);Fluoro-Carbon Elastomer